

Opihi - on campus



Community - Acceptance - Respect - Excellence

Issue 1, 4 February 2015



Welcome to Japanese in 2015!

All students at Opihi College get a small taste of the Japanese language and culture in Years 7 and 8. Then they can choose to study the language more in depth from Year 9 to 13. The goal for many of the students is to travel to Japan and use what they've learned in real-life situations on the biennial school trip to Japan. Others choose Japanese because it's a bit different; it's a challenge and fun at the same time.

February: Mr Morohoshi, our visiting Japanese teacher went back to Japan for the holidays, but he returned to Opihi College and will be teaching with us until mid-March.

March: Three students from our Japanese Sister City (Eniwa, Hokkaido) will visit us for three weeks! Would you like to host one of them at your home from 15 to 31 March? Contact Mr Lindblom. Also on 1 March is Japan Day in Christchurch. It will be a fun filled day of Japanese cultural activities and Japanese musical entertainment.

May: Language Perfect Vocabulary World Championships - A worldwide competition with big prizes open to all students.

July: They're coming again! Don't miss out on your opportunity to host a student from Shigakukan High School (Chiba, Japan) for three weeks! Please tell Mr. Lindblom if you are interested.

August: International Languages Week - Daily greetings in a different language and daily language quizzes all make for an exciting international languages awareness-raising week.

September: Unfortunately, no Japanese Language Trip this year. The next trip will be in 2016!

October: Konnichiwa Senior Japanese Speech Competition in Christchurch for Year 12 and 13 students.

Arigato gozaimasu!



NEWSLETTER PUBLICATION

The Opihi College Newsletter is published every fortnight on the Opihi College website. Paper copies will be printed **only for those who request them**. If you would like to continue to receive a paper copy of this newsletter, please complete slip below and return to the school office.



I would like to receive Newsletters in paper form

Student Name _____

Tutor Class _____

Parent Name _____

Signed _____



From Across the Principal's Desk

Dear Parents / Caregivers,

Kia ora tatou

Welcome back to the new school year and in particular welcome to the students, parents/ caregivers, whanau and staff who have joined Opihi College in 2015. I trust that the first week of the school year has gone well and that you have settled into the school well.

It was wonderful to see so many Year 7 students and their families join me and some of the staff at the barbeque last Friday. The event was hosted by our Year 13 Peer Support students who did a fantastic job with the catering and playing games with the students. Thank you Ms Manson for organising this event and the staff who did so much of the preparation during the day. To all the parents who came along and those that were not able to be there I would like to extend an invitation to you all to visit the school at any time to see the work our students are doing and to become involved in your child's education. Your help and support is vital to the success of all of our students.

New staff

As well as welcoming new students we have also welcomed a number of new staff into the school. These are:

Miss Georgia Griffiths	Maths
Mrs Ashley Herbert	Science
Ms Tamara Muirson	Maths and Science
Miss Alice Sutherland	Health, PE and Social Studies

I know that they will bring to the school new energy and ideas. Our Head students have written a short item to introduce each of our new teachers and this appears elsewhere in this newsletter.

Celebrations

With the start of the new school year, there is much to celebrate in terms of successes for Opihi College community.

ERO Report, 2015

In Term 4, 2014 Opihi College was reviewed by the Education Review Office. We were assured at the time the report would be positive. The report has now been confirmed and below are some of the comments from the report:

- Opihi College has made significant progress since the review in 2011 which is considerably benefiting the school and students' learning and well being

- The school's strengths are in the quality of care for students, support for their learning and generally good levels of achievement.
- The school is making good progress to make positive changes to learners' engagement, progress and achievement
- Leaders and teachers are making significant improvements with engaging students in an increasingly relevant and interesting curriculum
- Teachers help students to set goals that better focus their learning priorities and promote self directed learning. They use a good range of teaching approaches and, according to students spoken to by ERO, consistently going the extra mile to encourage and support learning.

This overwhelmingly positive report reflects the changes that have been undertaken by the leadership team, teaching and support staff, the students and wider community. I appreciate the support each group and individual has given during the transformation of Opihi College. It is a school of which the community can be very proud.

As I have said previously, we are always looking to improve and we will be looking to continue to build upon our current success and provide further opportunities for our students.

Copies of the report are available from the school office and may be downloaded from the ERO website once the report is loaded to their website.

In future newsletters I will be referring to many of our successes.



NCEA Results 2014

At the start of the year we also have the opportunity to reflect upon the successes of 2014. Our provisional NCEA results for last year show that we have some very good rates of success as detailed in the summary below.

2014 Achievement

	Level 1	Level 2	Level 3	UE
A	57%	76%	49%	
M	16%	19%	15%	
E	5%	5%	15%	
Total passed	77%	100%	79%	67%

NB The Government has set a target of 85% of all students achieving NCEA L2 by age 18 for 2017. There is a significant increase in the rates at which our students are gaining endorsements for the NCEA certificates. It is with pleasure that we will be recognising those students in the coming weeks.

We are also very proud of our NCEA Level 2 statistics and this reflects the level of support provided to students as detailed by ERO.

Sports team coaches and managers

The plans for new sports teams and coaches are well under way. In 2015 we have asked for potential coaches and managers to apply for the positions. As part of our efforts to keep young people safe we now require volunteer coaches and managers to consent to a police vet.

For any parent or family member who is interested in developing a sport at Opihi College, please contact Sally Mulvena, Opihi College Sports Co-ordinator for information.

Finally

I look forward to another successful school year at Opihi College and for the school to build upon the achievements which we have established over the last three years. I expect all students to be involved in the wider school life either participating in either sporting or cultural activities or both during the year.

I expect to meet many parents, caregivers and whanau during the school year as we open the school for mentoring and course conferencing. I encourage you to stay involved with your child's education and to support their progress during the coming year.

Ka kite ano



OPIHI COLLEGE UNIFORMS

PE Tops

PE Tops ordered last year have now arrived at the school office, and may be collected with payment of \$60. If you would like to purchase a PE top but have not ordered, we have a few PE tops in stock or we are able to order one for you at the office.

Ties, Sunhats, Beanies, Temuka Sports Socks

These are available for purchase new from the school office. *Ties \$20 Sunhats \$10*
Beanies \$10 Temuka Sports Socks \$10

Second Hand Uniform

The school has a small supply of second hand uniform which can be viewed and purchased at the school office.

The school office is now able to accept donations of unwanted uniform items, or alternatively to sell on your behalf. Uniforms must be clean and in saleable condition, kilts to have been dry cleaned please. Items which are stained, ripped or torn will not be accepted for sale. School retains 20% commission.

Any aspiring softball players should see Mr Lindblom if you're interested in playing this year. Practices will be every Thursday after school with games on Friday afternoon and evening. Play ball!



THETA - Sexwise - Presentation and workshop Friday 27th March 2015

The Ministry of Education has joined up with the THETA trust to present the above workshop at Opihi College to the Year 11 and 12 senior classes.

The Goal of the event is to challenge and motivate rangatahi/youth to discuss, explore and reflect on behaviours that affect their health and that of others, with reference to current accurate information. The event promises to be insightful and thought provoking and should ensure the students have been challenged in areas of their attitudes towards sexuality and sexual health. At the beginning of March a consent letter will be sent to parents and an event programme will be available from the school office for inspection.

2014 SCHOOL YEARBOOK / MAGAZINE \$20 per copy

Available now from the School Office.
These are able to be purchased by cash or cheque only.

RELAY FOR LIFE

On the 14th and 15th March, the annual Relay for Life is being held at Caroline Bay in Timaru. Last year we had a fantastic team of students that participated and raised almost \$2000 for cancer research. If your child would like to participate this year, they should have received a letter from Miss Henderson. If they haven't, it is not too late to register.

As a whole school, we will be having a **mufti day on Thursday 19th February** to raise funds for the Relay for Life. It will be a \$2 donation (but feel free to give more to this worthwhile cause)

If you have any questions regarding the Relay for Life, contact Vicki Henderson at school.

WaTER

Be heard!

YOUTH HUI 2015
CANTERBURY WATER
Orari, Opihi, Pareora Zone



*Youth forum noho marae,
Arowhenua - Temuka, South Canterbury*

Are you aged 15 - 25 years old?

Interested in water issues, environmental management and what's happening in South Canterbury?

When? *Wednesday 25 - Saturday 28 February 2015,
Arowhenua Marae, Temuka.*

Why? *As the future generation, it is important
we hear your voice now.*

What? *Field trips, practical activities and
workshop sessions.*

If you or someone you know would like to attend the hui, please contact Debbie Eddington, Youth Engagement Advisor debbie.eddington@ecan.govt.nz.

Please note: This is a FREE event for 15 - 25 year olds.



Coordinated by Environment Canterbury in partnership with Arowhenua Marae, Timaru District Council, and the Department of Conservation.

KO TE WAI TE ORA O NGĀ MEA KATOA
Water is the life giver of all things



MUSIC

First a big thank you to all students who performed at the school prize giving last year. It was very pleasing to see the talent and skill of our students on show.

As part of our school's music programme all students in Years 7 and 8 are required to have a recorder for music lessons. Recorders will be available from the office next week and cost \$14.00 each. All recorders that were loaned to students in 2014 must be returned to the music room this week. Please mark your recorder with your name or initials.

Thank you again, to the people who have donated unwanted instruments to our Music Department in 2014. If you have guitars that are unwanted or even needing repair, we can use those instruments to give more students the opportunity to learn to play them.

R Fleming



FOR YOUR CALENDAR

February	6	Waitangi Day— <i>School closed</i>
	12	Swimming Sport— Qualifying Rounds
	13	Yr 7 Peer Support Day at Peel Forest
	19	Relay for Life Mufti Day
	20	Swimming Sports
	24	Athletics Day
	25-28	ECan "Water" Youth Hui
March	2	Student Led Conferencing 4—8pm
	3	Student Led Conferencing 8—4pm <i>School closed for instruction</i>
	14-15	Relay for Life
	27	THETA Presentation & Workshop
April	2	End of Term 1

TIMARU DISTRICT COUNCIL NOTICE

LEVEL 4 Water Restrictions **STILL** apply to all urban and rural water supplies

Who is affected by water restrictions?

All consumers on Timaru District Council water supplies must comply with water restrictions set by council. Please note water from private bores is not subject to these restrictions.

Affected area

Timaru	Geraldine	Orari
Temuka	Pleasant Point	Peel Forest
Te Moana	Winchester	Rangitata Orari
Seadown	Beautiful Valley	Rangitata Huts
Downlands (the entire scheme)		

Remember to use water wisely and ensure run off is minimised

Unless demand is reduced further restrictions are likely to be imposed.

Please contact Timaru District Council should you have any questions with regards to this notice. 03 6877200

Term Dates 2015

Term 1	January 30	April 2
Term 2	April 20	July 3
Term 3	July 20	September 25
Term 4	October 12	December 7



NOW APPLY ONLINE LUNCHTIME SEMINARS

See website for details & closing dates

12.15pm - 12.45 pm

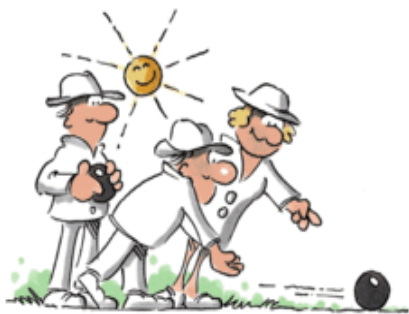
3rd March: Waimate	10th March: Ashburton
4th March: Fairlie	11th March: Timaru
5th March: Temuka	12th March: Methven

Bring your lunch & learn about how your organisation can now apply on-line



WHAT IS LAWN BOWLS ALL ABOUT?

Lawn Bowls is one of the easiest sports to learn to play. Lawn Bowls is one of the most challenging sports to play. Lawn Bowls is one of the hardest sports to master no matter what your age is. Many top athletes have been humbled on the green.



Should you take up the challenge you will benefit from increased hand-eye co-ordination, your ability to concentrate and focus on the task in hand will be increased and the physical strength of your legs, back and arms will be enhanced.

Of equal or greater importance is the sportsmanship and camaraderie that you will enjoy when you play bowls. People from all walks of life can be found on the bowling green. Generally they are a fun loving group of people who are delighted to welcome new bowlers to the green and the Club.

Opihi College students wanting to try the challenge of bowls can try it for themselves at the Temuka Bowling Club, in the Domain on Thursdays from February 5th at 5.00 p.m.

We have lots of new, coloured, bowls waiting for you. Heelless footwear is needed.

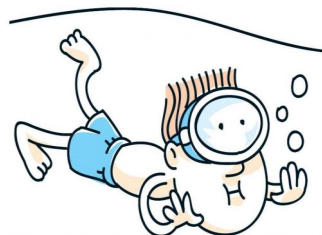
Should there be sufficient interest the Club is considering donating a trophy for Interhouse competition.

PORT FM TEMUKA POOL PARTY

*Waitangi Day 1—4pm
Temuka Domain
Swimming Pool*

Lots of fun and prizes
'Splash for Cash'
Tip Top Major Prize
Draw 3.30pm

If wet, will be held on
Sunday 8th Feb



BronzBeat Studio of Dance.

Classes in Jazz and Hip Hop. From ages 3 and up. Syllabus and Non-Syllabus. Fun Classes, Awesome Teachers. Our students enjoy learning in a relaxed atmosphere. Classes for Grown-Ups too. Contact Bronwyn 021 155 9692 or bronwyn@bronzbeat.co.nz.



Second-Hand Ball Gowns Wanted

Will be sold on a donation/commission basis

For a 2nd hand Ball Gown Expo 28th March 2015

Garments can be dropped off or collected on
Saturday 13th March 2015
at Highfield Plunket Clinic, Wai-iti Road, Timaru
1:00pm - 3:00pm

Gowns must be in good selling condition.
Also taking footwear, costume jewellery
in good selling condition

Register your interest by 18th March 2015
With Rebecca Smith 022 017 3103
or Megan Wilson
0272801969

Plunket Timaru Branch Fundraiser

Together, the best start for every child | Whānau āwhina



Entry forms available at the school office

INTRODUCING OUR NEW STAFF AT OPIHI COLLEGE

Miss Griffiths

Introduction by Casey-Jayne

Miss Griffiths is from Timaru and attended Roncalli College. After High School, Miss Griffiths was accepted into Otago University studying a three year degree of a Bachelor of Science majoring in Maths, Statistics and Psychology, and having her first year of teaching last year. When asked why she chose to become a Maths Teacher, her answer was simple, "I just love maths and helping people". Miss Griffiths is teaching both Year 9 and one Year 10 Maths classes and Level 3 Statistics. Her hobbies include singing, playing guitar and sports including netball and tennis. Miss Griffiths main goals this year are to stay organised, and to create great relationships with her students.



Miss Muirson

Introduction by Harley

Mrs Muirson is a sporty Science Teacher who grew up in Rangiora. She enjoys playing touch, soccer and horse riding, and has a degree in Environmental Science.

After finishing her course at Teachers College in 2013, she taught Maths at Christ's College for a year, then flew to London to teach Science through 2014.

In 2015, her goal is to push her students as much as possible, while getting to know the local area better.



Mrs Herbert

Introduction by Madison

If you haven't already met Mrs Ashley Herbert, Opihi College's new Science and Chemistry Teacher, you are really missing out. Born in Bristol, England; Mrs Herbert studied Pharmaceutical Chemistry, and later went on to train to be a teacher. Mrs Herbert moved to New Zealand one year ago because of her passion for adventure. She loves New Zealand and was married in Queenstown. Her hobbies include baking, cooking, gardening and hiking. In pursuit of these hobbies, Mrs Herbert's short term goal is to run a half marathon and to explore New Zealand. Her long-term future goal is to ultimately become a school principal. Mrs Herbert aims to increase the interest in science at Opihi College by getting everyone to join the subject, in order to make sure that everyone loves science as much as she does. She looks forward to meeting and teaching everyone.



Miss Sutherland

Introduction by Jaime

Introducing Miss Sutherland, and welcoming her to the Opihi College family! Miss Sutherland is originally from Te Anau and portrays the "Always up for anything" attitude. She has a very sporty personality, with just some of her hobbies being tramping, netball, basketball, touch and also playing guitar to keep the musical vibes going! Miss Sutherland comes from a small community. We welcome her into Opihi College with a P.E. degree and a Graduate Diploma in Teaching. This qualifies her to teach PE, Health and Social Studies. Miss Sutherland strives to achieve, she has set herself a number of goals in order to have a successful 2015 at Opihi College, one of these goals being "to get to know the students". Also embracing the school C.A.R.E. values Miss Sutherland aims to get involved with the community, sport and culture. Overall we are very excited to have Miss Sutherland joining the Opihi College family.



STUDENT LEADERS FOR 2015

Head Students

Casey-Jayne Wilson & Madison Martin

Deputy Head Students

Harley Cawkill & Jaime Gould

House Captains

Aoraki	Samantha Haley	Jaime Gould	
Opihi	Learna Hausler	Sara-Jane Chapman	Wiremu Te Haate
Pacific	Lyndon Murray	Tea Prentice	Lori McDonald
Rata	Tegan Robertson	Lydia Kinvig	



ROCK ON

Rock On is an inter-agency truancy initiative that was developed by Police staff at the North Hamilton Policing Centre in July 2003 and has expanded throughout the country. This type of initiative ensures that agencies work together to achieve an early intervention for at-risk-youth.

The monthly interagency meeting is a key component of the Rock On project. The meetings are usually at the local school and involve the Senior Management, School Counsellor and Attendance Officer. Where appropriate, the Primary Schools are often involved. Other agencies attending are CYFS, MOE, CAMHS, Public Health (nurse) and Community Youth Worker. The School identifies chronic truants that have not responded to intervention from the school. The names are brought to the Rock On forum and a response is planned to address the cause of truancy. Responses to the student and family are focused on offering the best support to re-engage them in education.

Parallel to the intervention is a series of letters that escalates the response from Rock On agencies to the family if school attendance does not improve. This includes holding a care and protection Family Group Conference and ultimately the prosecution of parents. There can be multiple reasons why students have absences, the aim is to offer any help needed to get the student settled and happy at school.

In a recent study published in the journal 'Educational Studies' researchers Attwood and Croll found that truancy of all types was associated with a variety of negative outcomes. Even truanting 'for the odd day or lesson' is associated with 'much poorer outcomes than those of non-truants'. By way of example, the authors found that low-level truants were twice as likely to be unemployed at age 20 than non-truants, and high level truants four times.

Our Attendance Officer is Janine Murray. Please do not hesitate to contact her at school.

SCHOOL DIARY RESOURCES FOR PARENTS

Parents are invited to access the resources we have purchased with the school diaries. There are many valuable resources which parents may be interested in reading.

To view, visit the school website.

HOST A JAPANESE STUDENT FROM OUR SISTER CITY

Do you want to learn a little about another country or another language? Why not host a student from Japan and give it a try! We're looking for host families to provide homestays for one or two Japanese students aged 14-17 from 15 to 28 March. They don't need a special room



of their own, just a bed to sleep in and a little space for their luggage. You don't have to go out of your way to do anything special with them; simply welcome

them into your home and include them as part of your family. Your student would attend school from Monday to Friday. Please write to Mr. Lindblom at lindblome@opihicollege.school.nz or ring the school to express your interest.

Thank you!