

# NEWS



**Community - Acceptance - Respect - Excellence**

Issue 12 24 August 2023

## OPIHI COLLEGE ENROLMENTS

Opihi College is currently now accepting and welcoming In-Zone Enrolments for 2024.

Please go to our website

<https://www.opihicollege.school.nz/our-school/enrolments>

and follow the steps to complete the application. You will receive an email acknowledgement when your submission has gone through successfully. Please call our office if you have any issues at all, our office staff will be only too happy to assist and help you through this process if there are any issues. If for some reason, you do not have access to complete an on-line enrolment application, we do have paper copies available that can be collected from the Opihi College Office. We would appreciate all enrolments being in by the end of Term 3 so that we can commence class planning and class placements.

### Opihi College Enrolment Zone

**Important: Before you commence the enrolment of your child, please check our Enrolment Home Zones that are on the Enrolment front page of our website.**

There is a full list of all Streets/Roads that are included in our Enrolment Home Zone that was implemented earlier this year.

### Ballot for Out of Zone enrolments

For students who do not reside within our enrolment zone, application will need to be made for our upcoming ballot. There will be one ballot in 2023 for available spaces for out of zone students to enrol at Opihi College in 2024.

### Out of Zone enrolments for siblings of current students

**Please note younger siblings of current students who do not reside within our enrolment zone will need to apply to enrol in our ballot.** The enrolment of siblings of current and former students is provided for in the second and third priority groups of out of zone students. Proof of a sibling relationship may be requested by the board.

## OPIHI COLLEGE HOCKEY



The Opihi College hockey team have had a great first season where they all developed their hockey skills; and then finished in the top 4 teams in their grade of the Hockey South Canterbury Youth Competition. Grateful thanks to their coaches Bruce Mattingly and Robin Clarkson, and Sports Co-ordinator Anna McNoe for assisting with management of the team. *Well done to you all!*

### **BASKETBALL**

Well done to Josh, Connor, Reid, Ava, Ben and Ty who represented South Canterbury in basketball this past weekend - we are so proud of you all!



### **FISHING**

Mr Gerber took a small group out for the day last weekend to have a go at fishing. Unfortunately no fish were caught, but some sausages were cooked and a chilly winters day was enjoyed nonetheless! Looking forward to the next trip which will be a surfcasting adventure. *Thank you Mr Gerber!*



## WELCOME

Welcome to new students who have recently started at Opihi College:

Eden Carter  
John Dabu  
Calix Flores  
Leia Gerber  
Lukhan Gordon  
Liam Hastie  
Corbin Lee  
Princess Luzon



*We hope you enjoy your time here!*

## SENIOR COURSE CONFIRMATION

**Tuesday 5th September &  
Wednesday 6th September 2023**

Students who will be in Years 11 –13 in 2024 and their families are invited to book Senior Course Confirmation appointments between the hours of 4.30pm and 6.30pm on Tuesday 5th September, and 3.20pm and 5.00pm on Wednesday 6th September.

- Code **bkd2b** on the [schoolinterviews.co.nz](https://schoolinterviews.co.nz) website
- Please note these interviews are with your child's **Dean:**

*Aoraki Dean - Mr Grace  
Opihi Dean - Ms Busson  
Pacific Dean - Mr Gerber  
Rata Dean - Ms Mortimer*

*Also Available to meet with are:  
Gateway & Careers - Mr Mills  
E-Dean Distance Learning - Ms Busson*

- Appointments are for **ten minutes each**, it will be essential families arrive on time.
- **It is mandatory that students going into Year 11 in 2024 attend an interview.** We highly recommend senior students who will be in Years 12 and 13 in 2024 attend an interview.
- All interviews will be held in the hall.
- Bookings will be unable to be made on the day.
- Please contact the school office if you require any assistance.

*We want to remind families that you do not have to wait for conferences to discuss any issues with subject teachers. You are more than welcome to contact teachers at any stage and arrange a meeting.*

## RELIEF TEACHERS

Opihi College are always keen to welcome new relief teachers to our team. If you or someone you know who is a registered teacher would like to join our team please contact Mr Grace or Mrs Rose.

## FOR YOUR CALENDAR 2023

<b>August</b>	28-30	Geography Field Trip <i>Mt Cook</i>
<b>September</b>	5	Senior Course Confirmation <i>By appointment</i> 4.30pm—6.30pm
	6	Senior Course Confirmation <i>By appointment</i> 3.20pm—5.00pm
	6	BOT Meeting 5.30pm
	7	Ski Trip to Mt Hutt
	8	University of Canterbury Open Day
	11-15	Senior Assessment Week
	19	School trip to Japan
	22	End of Term 3

## TERM DATES FOR 2023

Term 3 - Monday 17 July to Friday 22 September 2023

Term 4 - Monday 9 October to 13 December 2023

## POLICY REVIEW

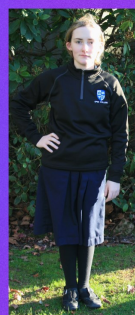
This term our Board of Trustees are reviewing the following School Docs policies at our next board meeting:

1. Learning Support
2. Inclusive Education
3. Maori Educational Success

These policies are able to be reviewed by parents and staff also. If you wish please view the policies on our website, and report any suggestions to our school office.

# NEW

JUST ARRIVED AT  
THE WAREHOUSE



**OPIHI COLLEGE  
SWEATSHIRTS**



\$67 - \$72 EACH



# Our updated Uniform Code

## Opihi College Uniform – School Regulations 2023

### Junior Uniform (Years 7-10)

#### Tops

- Mid-blue polo shirt with school crest
- Dark Royal, V-necked, long sleeved jersey with school crest
- Dark Royal, V-necked, vest with school crest
- Black school sweatshirt with school crest
- Black soft-shell jacket with crest; or any plain black water-resistant jacket.



#### Bottoms

- Navy blue dress shorts (not cargo style)
- Inverted 2-pleat navy skirt
- Navy blue skort
- Long black dress trousers
- "Blue Watch" tartan kilt



#### Socks

- White or black turn over top ankle socks (not sports socks)
- Black stockings
- Black over the knee socks (to be worn with kilt/skirt only and must look like tights, therefore not visible as socks)
- School socks - dark grey with black, blue and white hoop



### Senior Uniform (Years 11-13)

#### Tops

- White straight hem, short sleeve, collar band, shirt
- White long sleeve, collar band shirt (must be tucked in)
- Dark Royal, V-necked, long sleeved jersey with school crest
- Dark Royal, V-necked, vest with school crest
- Black soft-shell jacket with crest; or any plain black water-resistant jacket
- School blazer and tie. *This is compulsory for Year 13 students; and highly recommended for Year 11 & 12 students.*



#### Bottoms

- Navy blue dress shorts (*not cargo style*)
- Inverted pleat skirt navy
- Long black dress trousers
- "Blue Watch" tartan kilt

#### Socks

- White or black turn over top ankle socks (*not sports socks*)
- Black stockings
- Black over the knee socks (to be worn with kilt/skirt only and must look like tights, therefore not visible as socks)
- School socks - dark grey with black, blue and white hoop

***Uniform items are only available from SchoolTex online, The Warehouse Timaru or the College Office.***

## Other items - Junior and Senior

- All students to wear **black shoes of a plain design with enclosed toes**. They must be shoes, not boots. They must comply with Health and Safety requirements for protection of the foot in technology and science areas.
- Students are strongly advised to wear a plain black or navy-blue bucket hat or cap in warm weather. Both styles can be purchased from the school office.
- Plain navy blue or black beanies and scarves may be worn outside.
- PE uniform - Opihi College PE shirt with black shorts. A change of socks is to be worn with gym shoes.

*(The P.E. shirts are only available to purchase through the school office.)*



## **Personal Presentation – School Regulations**

These regulations apply to all students.

- Hair must be clean, tidy (out of eyes) and of a natural colour. Plain elastic hair ties must be in school/hair colours. (Blue, black, brown and white.) Facial hair must be tidy and well groomed – no beards.
- A Taonga or other item of religious or cultural significance may be worn inside clothing. It is to be removed for health and safety reasons as required.
- Students may only wear **plain** stud earrings in their ears at their own risk. No other jewellery should be visible. No facial or tongue piercings. Visible tattoos are not permitted.
- Make-up and coloured nail polish are not to be worn with school uniform.

The school uniform is to be worn correctly and neatly at all times.